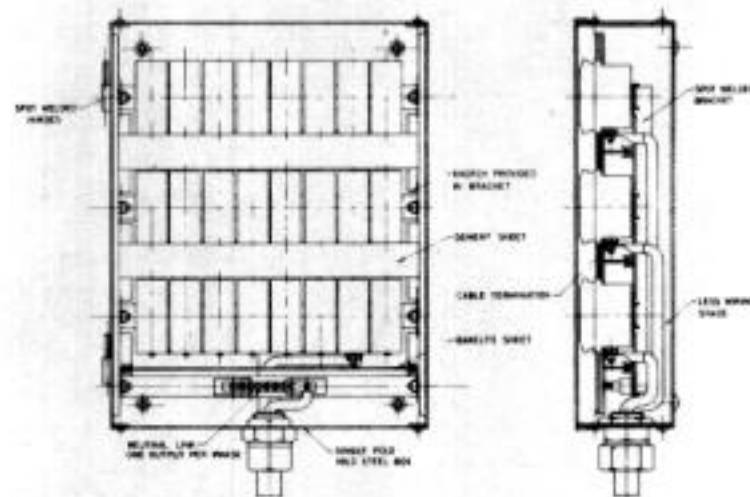
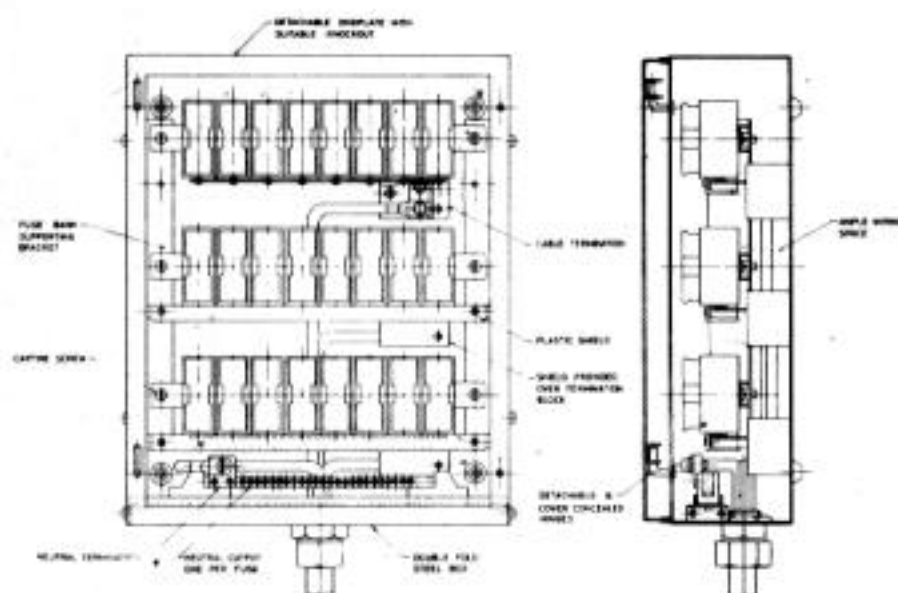


DISTRIBUTION FUSE BOARD



CPL

- ✓ 1. Ample wiring space is provided at the top for outgoing circuit, bottom for the Main cables & underneath for circuit wiring.
2. Designed for copper and Aluminium conductors.
3. Fuse base & Fuse carriers are made of highest grade vitreous Porcelain which is baked in Oil fired tunnel kiln at an uniform temperature of 1200°C & having uniform colour.
4. The enclosures are made from rust protected steel sheet having double fold and detachable endplates.
5. Gasketed covers are provided with concealed hinges and are removable.
6. The Distribution fuse boards are so designed that the complete facilitate in wiring.
7. The Main cable termination is designed in such a way that the cable need not be bonded. The cable lies parallel to the bottom of distribution fuse board.
8. All live terminals are shielded and is practically impossible to come in contact with live contact.

CONVENTIONAL

1. Wiring space is very much limited.
2. Can accept only copper conductors.
3. Fuse base and fuse carriers are of inferior quality baked in conventional coal fired kiln where the temperature is not uniform and resulting in uniform colour.
4. Enclosures are having single fold which makes the boxes very weak.
5. Hinges are visible outside. In many cases covers are not removable.
6. Difficult to remove.
7. It is very difficult to connect the Main cable due to the limitation of space and it requires the cable almost at 90° degrees.
8. All terminals are not shielded and hence risky.

CHOKSONS PRIVATE LTD.

P. O. BOX. : 8943, SAKI VIHAR ROAD, POWAI, BOMBAY - 400 072.