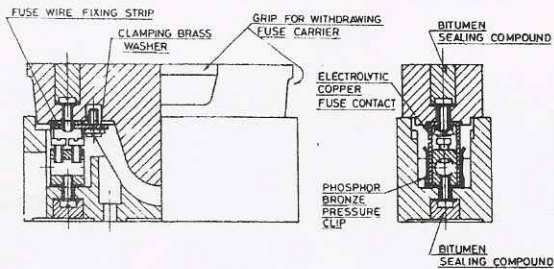
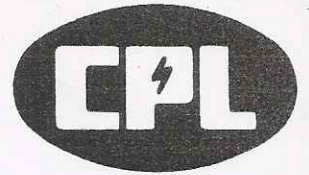
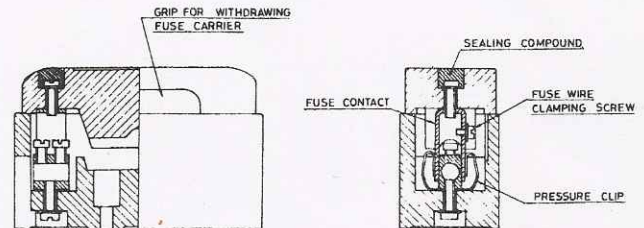


PORCELAIN FUSE UNIT



H.R.C. - REWIREABLE



ONLY REWIREABLE

CPL

1. CPL Fuse base and fuse carriers' are made of best vitreous Porcelain free from iron particles and fired in a oil tunnel kiln at 1200°C. Resulting in uniform curing uniform colour.
2. Terminals are made from extruded brass casting having a very highly polished surface finish.
3. Two terminalscrews are provided in 16A & 32A while a single stud having rounded end to the prevent conductors from getting damaged.
4. Pressure clips are made of Phospher bronze for perfect and long lasting contact pressure.
5. Additional fuse wire fixing strips has been provided.
6. The 'U' fuse contact is made from electrolytic copper.
7. The Porcelain fuse unit complies with ISS 2086
8. Asbestos cloth is provided in all the fuses to quench the are provided during the blowing of fuse wire.
9. The design is such that HRC Fuse carrier is interchangeable with Rewireable carrier.
10. Each and every fuse is packed in to individual printed carton to avoid breakage.
11. A special brass cup washer is provided for the clamping of fuse wire.
12. All the line parts of fuse base and carriér are sealed with bituminus sealing compound.

CONVENTIONAL

1. Porcelains are fired in a conventional coal fired liin where the temperature is not uniform resulting poor surface.
2. Terminals made of casted brass are not free from draw lines.
3. Two Screws of smaller diameter provided on all the rating which are not sufficient to clamps big size conductors.
4. Pressure clips made of brass.
5. The fuse wire fixing arrangement is provided on the fuse contact itself.
6. The puse contact are made of copper or Brass in some cases.
7. Does not comply with ISS 2086.
8. Asbestos cloth not provided
9. The design is purely Rewireable type and does not accept
10. Are not packed individually. HRC fuse carrier.
11. Flat washer is used
12. Only the live parts of carriers are sealed.