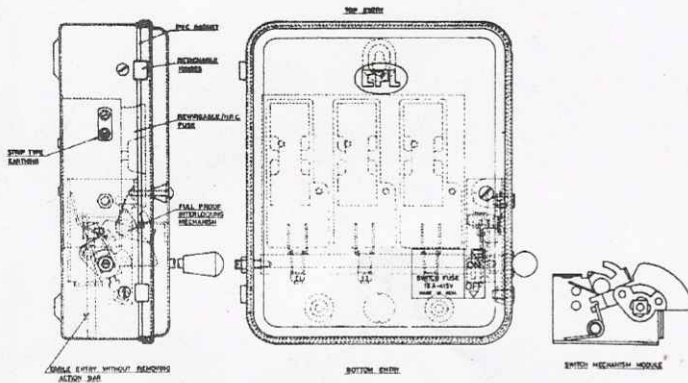
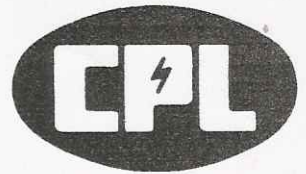
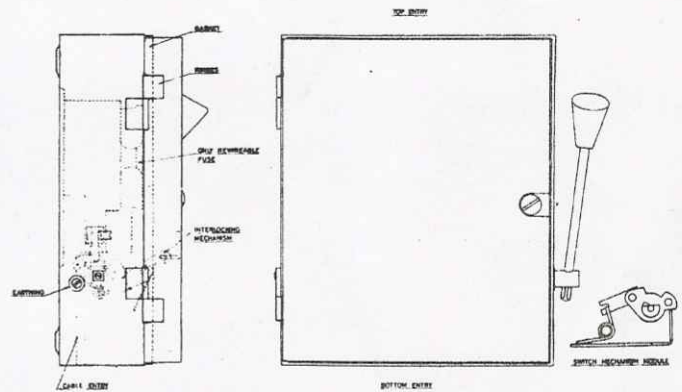


SWITCH FUSE



CPL

1. CPL 'OSCAR' Switchfuse create better and faster working condition.
2. Ample wiring space is available.
3. Vitreous Porcelain Switch block of 16A & 32A are in one piece and of 63A, 100A & 200A are in 2 pcs. type i.e. Fuse and terminal block is separate to avoid breakage.
4. Porcelains are baked in an oil fired kiln tunnel at a uniform temperature of 1200°C resulting proper baking, better surface and uniform colour.
5. Pressure clips are made of phospher Bronze for better and permanent contact.
6. Terminal are highly polished extruded brass castings
7. As the boxes are deep drawn uniformity is maintained.
8. Safest interlock device which could be released only with the switch is off i.e. the action contacts are released from the Porcelain block contacts.
9. The mechanism is pre-assemble module so that replacement is very easy.
10. The positioning of moving contact is such that during wiring the action bar need not be removed.
11. Semi pierced knockouts are provided top & bottom at appropriate distance for easy entry of conduit pipe with any kinds.
12. Double strip clamping type earthing is provided.
13. PVC Gasket is provided for weather proofing.



CONVENTIONAL

1. Working condition restricted.
2. Wiring space is limited.
3. Switch block for 63A Switchfuse also is one piece
4. Porcelains are baked in an conventional coal fired kiln where the temperature is varying resulting poor surface, improper baking and different colour.
5. Pressure clips are normally made of Brass.
6. Brass casted terminals are having draw lines.
7. Boxes may not be uniform as they are fabricated.
8. Interlock is not full proof, it can be released with switch being in the on position.
9. Cannot be replaced as it requires technique for assembling.
10. The action bar has to be removed for easy in wiring.
11. Knockout provided are not positioned properly hence lot of time is wasted for the entry of conduit pipe through the knockout hole.
12. Ordinary Screw type earthing is provided.
13. Weather proofing is not full proof.